



# All-In-One Cyber Protection & Insurance

The most effective combination of threat prediction, breach protection and cyber insurance coverage.



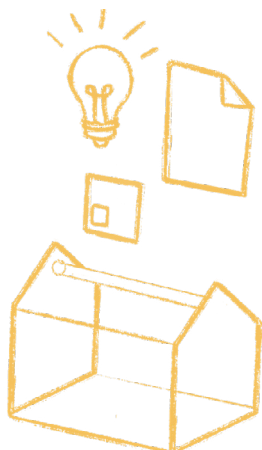
## ► \$5 Million Limit Available

### Full Policy Limits for:

-  Ransomware
-  Online & Multimedia Liability
-  Business Interruption

### All Cyberboxx Policies Include:

- **24/7 Breach Response**  
Direct access to the professionals.
- **Online Safety Training**  
Make sure everyone on your team is cyber aware.



### Industry Appetite

- Accommodation \*under 25M
- Administrative & Support
- Waste Management
- Remediation Services
- Agriculture, Forestry, Fishing & Hunting
- Arts, Entertainment & Recreation
- Construction
- Educational Services
- Financial Services
- Food Services
- Health Care & Social Assistance
- Informational & Cultural
- Lawyers, Legal & Law Services
- Management of Companies
- Manufacturing \*under 50M
- Mining, Quarry & Oil & Gas
- Professional Services
- Scientific & Technical
- Public Admin
- Real Estate
- Retail Trade
- Transportation & Warehousing
- Wholesale Trade

**Outsmarting  
Cyber Risk  
Together.**

**For more assistance please contact:**  
[concierge@boxxinsurance.com](mailto:concierge@boxxinsurance.com)